

BASIC RULES FOR GRAPHIC EXECUTION OF CONSTRUCTION DRAWINGS

Mamurova Feruza Islamovna
Barotov Ashurali Ixtiyor o`g`li
Tashkent State Transport University

Annotation: this article provides information about the Basic Rules for the graphic execution of construction drawings and provides the results of the analysis

Keywords: engineering graphics, reinforced concrete, construction, coordinate reading, reinforcement schemes, plan, facade, trim.

Construction drawing engineering graphics aloxida"construction drawing", designed according to the requirements of an educational person in construction specialties, provides students with the main goal of teaching and performing construction drawing, theory and practical knowledge on the preparation of design and technical services of the development of training qualification. The reading of the course" construction drawing " is carried out on the basis of the unified system of construction farms (ESKD) and normatives of State Standards (GOST).

According to binary operation, it divides into three different groups: Fuqoro buildings-complete data for human livelihoods. They will be residential joy and community buildings (clubs, theaters, schools, diseases). Production buildings-today the construction serves to house the weapon of transport and industrial production. Enterprises, factories, power plants, hot buildings, garages v. x.K. Agricultural buildings-consisting of Mills, warehouses, buildings where oats and humicates are stored, agricultural machines and buildings on which they are remontant. In addition the building divides into high-rise buildings (above 9 skirts), high-rise buildings (above 3 floors) and low-rise buildings. Taking into account the floors also include underground floors, mansars and no less than 2m sokol floors. Rooms that are located at a homogeneous height in buildings-are called brackets. Floors located above ground level are called above-ground floors. A pumpkin that does not exceed half the height of the rooms and does not pass through the Earth's surface in the chimney is called a sokol. The pumpkin that is located in the cherdak is called mansarda. Engineering facilities are located in the so-called state-of-the-art. Today, when preparing project estimate documentation, building norms and rules (SNiP) are observed. With the completion of the assignment, the chief loyalist concluded that the surrender areas were complied with. Develops jobs based on the specified project. Work project-develops according to the developed technical-economic basis, according to the technical-economic Service and according to the project assignment. In, production and development buildings, are used in the construction of rural residential buildings. That have been put into use many times are divided, and their leaving includes work drawings, necessary construction installation work, comprehension letters and estimates. Complete signs based on work drawings. The construction of the building involves a huge amount of work. These works will be the main construction and specialized work. The main construction work includes the construction and decoration of the building, the specialized work includes the repair and landscaping of the building. GOST 21. Each work drawing according to 101-1998 is named, they show the base of the characters and the main set of characters.

In the construction drawings, drawings of the plan, facade, trim, structures, details and other industrial, agricultural buildings are performed on 2.302-2014, where followed 21.501-2014.

The construction drawing uses types of drawings according to 2.303-2014. All seen drawings performed in the same exercise must be the same. Drawing up drawings of the plan, facades and trimmings at mm.

In the construction drawing, games are added to GOST 2.307-1998 according to 21.105-1998 taking into account the project documentation. In the construction drawing, games closed chain

118	ISSN 2277-3630 (online), Published by International journal of Social Sciences & Interdisciplinary Research., under Volume: 12 Issue: 05 in May-2023 https://www.gejournal.net/index.php/IJSSIR
	Copyright (c) 2023 Author (s). This is an open-access article distributed under the terms of Creative Commons Attribution License (CC BY). To view a copy of this license, visit https://creativecommons.org/licenses/by/4.0/

considered displayed in MMS. The size lines border the sequential characters and they will be 2-4 mm long at 45 degrees. Drawn at a distance of 10 mm from the first picture Line, 7 mm from the middle of the next picture line, at an interval of 4 mm from The Last Picture line to the coordinate reading circles (Figure 1

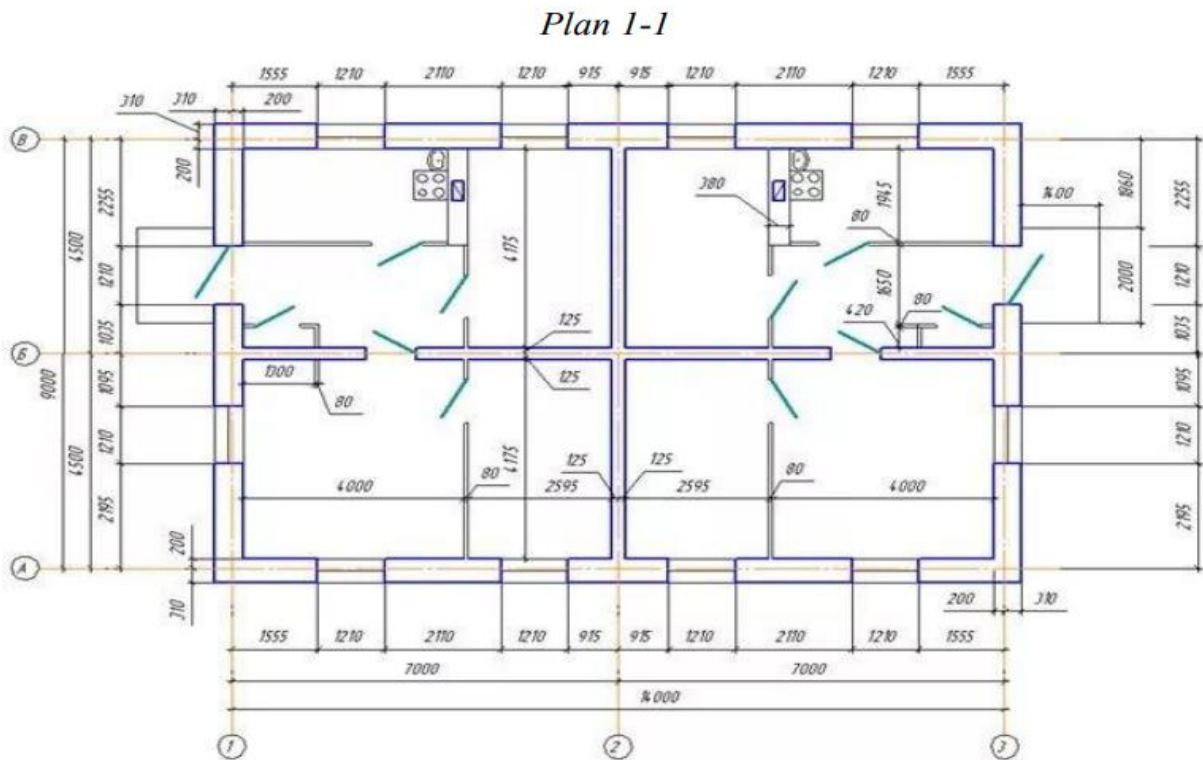


Figure 1

In the plans, trimming, facades of building buildings, conditional signs of SATX are indicated in relation to the floor of the first floor. First of all, Poli's line is conditionally taken to be zero line. On the facade and plans, the rows are indicated by arrows on the shelves. In these cases, the arrows are divided at an angle of 45 degrees and indicated by a 2-4 mm long Main Line (Figure 2).

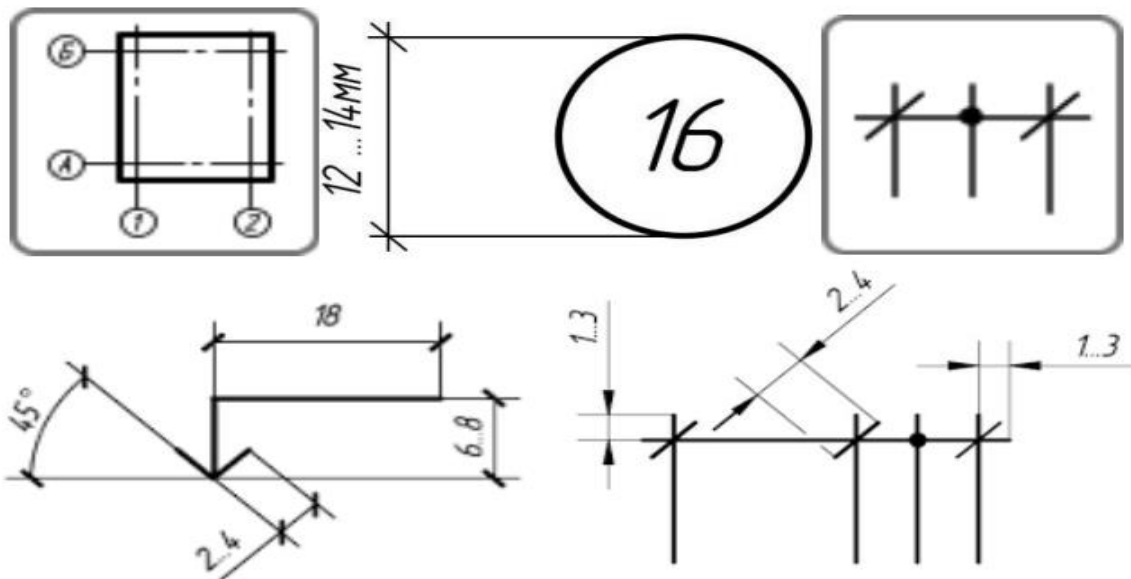


Figure 2

Building drawings and their constructions .

Parts that are independent within a building are called its constructs. 1st foundation, 2nd slope, 3rd sokol, 4th inner base walls, 5th floor construction, 6th heat retaining coating, 7th door position, 8th strapiles, 9th roof closures, 10th story, 11th pillar, special climbing joy to 12th Ward, 13th Ward, 14th par wall, 15th window view, 16th Bell, 17th zina rail, 18th zina square, 19th (Figure 3).

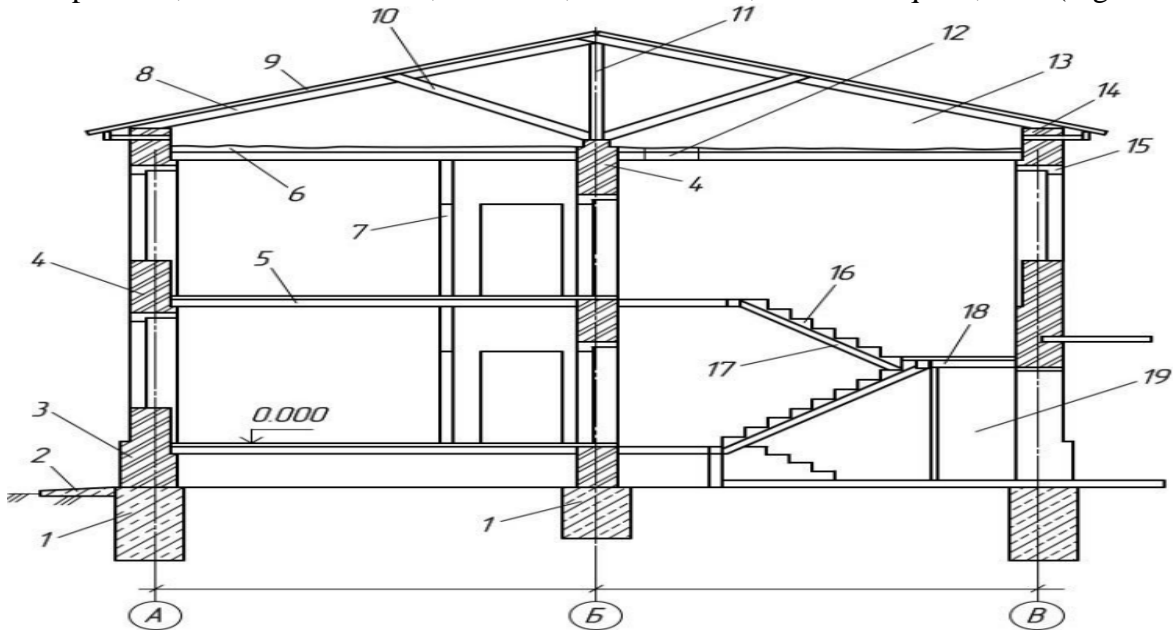


Figure 3

A plan is said to be an image of a building formed from the fact that the information is cut with the main horizontal plane at one height (Figure 4).



Figure 4

According to GOST 21.501-80, this textile should be taken at a height of 1/3 of the floor. Accommodation should be taken throughout the game and Door Games in the premises of joy. The plan provides information on how the building was conceived and arranged, the layout and layout of its rooms, the main walls, columns, stairs. Do not see in the plan does not show constructive elements.

Whatever scale the plan for sanitary and technical equipment is, they are also drawn on such a scale. Sometimes stand joy and the layout of furniture and household items in the plan of the community building shows the number (Figure 5).



Figure 5

List of literature used

1. Saidnabievich, S. S., & Islamovna, M. F. (2023). Educational Competence in Training Future Engineers. *Pioneer: Journal of Advanced Research and Scientific Progress*, 2(2), 46-48.
2. Mamurova, F. I. (2022). Competence for a Graduate in the Development of Regulatory Requirements to the First Place. *Vital Annex: International Journal of Novel Research in Advanced Sciences*, 1(6), 10-12.
3. Islamovna, M. F. (2023, May). REFORMS IN THE EDUCATIONAL SYSTEM. In *Integration Conference on Integration of Pragmalinguistics, Functional Translation Studies and Language Teaching Processes* (pp. 190-194).
4. Mamurova, F. I. (2022, December). IMPROVING THE PROFESSIONAL COMPETENCE OF FUTURE ENGINEERS AND BUILDERS. In "INTERNATIONAL SCIENTIFIC CONFERENCE" INNOVATIVE TRENDS IN SCIENCE, PRACTICE AND EDUCATION" (Vol. 1, No. 4, pp. 97-101).
5. Mamurova, F. I., & Alimov, F. H. (2023). Sections in Engineering Graphics in Drawings. *Pioneer: Journal of Advanced Research and Scientific Progress*, 2(3), 107-110.
6. Mamurova, F. I. (2021). PROBLEMS OF THEORETICAL STUDY OF PROFESSIONAL COMPETENCE OF CONSTRUCTION ENGINEERS. *Таълим ва инновацион тадқиқотлар*, (4), 104-108.
7. Mamurova, F. I., & Alimov, F. H. (2022). Surface Formation and its Assignment on the Monge Plot. *Web of Scholars: Multidimensional Research Journal*, 1(8), 28-31.
8. Odilbekovich, S. K., & Islomovna, M. F. (2023). Technology of Work on the Replacement of Contaminated Ballast below the Sole of Sleepers. *New Scientific Trends and Challenges*, 1, 21-24.
9. Odilbekovich, S. K., & Islomovna, M. F. (2023, January). Facilities and Devices of the Yale Farm. In *Interdisciplinary Conference of Young Scholars in Social Sciences* (pp. 21-23).
10. MAMUROVA, FERUZA ISLOMOVNA. "FACTORS OF FORMATION OF PROFESSIONAL COMPETENCE IN THE CONTEXT OF INFORMATION EDUCATION." *THEORETICAL & APPLIED SCIENCE* Учредители: Теоретическая и прикладная наука 9 (2021): 538-541.
11. Mamurova, F., & Yuldashev, J. (2020). METHODS OF FORMING STUDENTS'INTELLECTUAL CAPACITY. *Экономика и социум*, (4), 66-68.

12. Islomovna, M. F., Islom, M., & Absolomovich, K. X. (2023). Projections of a Straight Line, the Actual Size of the Segment and the Angles of its Inclination to the Planes of Projections. *Miasto Przyszłości*, 31, 140-143.
13. Mamurova, F. I. (2022, December). IMPROVING THE PROFESSIONAL COMPETENCE OF FUTURE ENGINEERS AND BUILDERS. In INTERNATIONAL SCIENTIFIC CONFERENCE " INNOVATIVE TRENDS IN SCIENCE, PRACTICE AND EDUCATION" (Vol. 1, No. 4, pp. 97-101).
14. Islomovna, M. F. (2022). Success in Mastering the Subjects of Future Professional Competence. *EUROPEAN JOURNAL OF INNOVATION IN NONFORMAL EDUCATION*, 2(5), 224-226.
15. Babakhanova, N. U. (2019). FEATURES OF ACCOUNTING IN RAILWAY TRANSPORT AND ITS PRIORITIES FOR ITS DEVELOPMENT. In *WORLD SCIENCE: PROBLEMS AND INNOVATIONS* (pp. 33-35).
16. Shaumarov, S., Kandakhorov, S., & Mamurova, F. (2022, June). Optimization of the effect of absolute humidity on the thermal properties of non-autoclaved aerated concrete based on industrial waste. In *AIP Conference Proceedings* (Vol. 2432, No. 1, p. 030086). AIP Publishing LLC.
17. Pirnazarov, G. F., Mamurova, F. I., & Mamurova, D. I. (2022). Calculation of Flat Ram by the Method of Displacement. *EUROPEAN JOURNAL OF INNOVATION IN NONFORMAL EDUCATION*, 2(4), 35-39.
18. Mamurova, F. I. (2021). The Concept of Education in the Training of Future Engineers. *International Journal on Orange Technologies*, 3(3), 140-142.
19. Islomovna, M. F. (2023). Methods of Fastening the Elements of the Node. *EUROPEAN JOURNAL OF INNOVATION IN NONFORMAL EDUCATION*, 3(3), 40-44.
20. Islomovna, M. F. (2023). Engineering Computer Graphics Drawing Up and Reading Plot Drawings. *New Scientific Trends and Challenges*, 120-122.
21. Raximov, S. D., and S. S. Sodiqov. "TEXNIK SOHA MUTAXASSISLARI O 'QUV FANLARINI O 'QITISH TAYYORGARLIK JARAYONIDA C++ DASTURIDAN FOYDALANISH ZARURATI." *INTERNATIONAL CONFERENCE: PROBLEMS AND SCIENTIFIC SOLUTIONS..* Vol. 1. No. 7. 2022.
22. Khodjayeva, N., & Sodikov, S. (2023). Methods and Advantages of Using Cloud Technologies in Practical Lessons. *Pioneer: Journal of Advanced Research and Scientific Progress*, 2(3), 77-82.
23. Халимова, Ш. Р., Мамурова Ф. Я. (2023). Изометрическое и диметрическое представление окружностей и прямоугольников. *Miasto Przyszłości*, 33, 128-134.
24. Babakhanova, N. U. (2019). FEATURES OF ACCOUNTING IN RAILWAY TRANSPORT AND ITS PRIORITIES FOR ITS DEVELOPMENT. In *WORLD SCIENCE: PROBLEMS AND INNOVATIONS* (pp. 33-35).